

PRECALCULUS QUIZ # 4

NO BOOKS, NOTES OR CALCULATORS

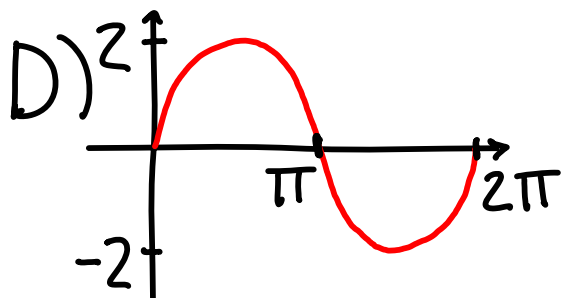
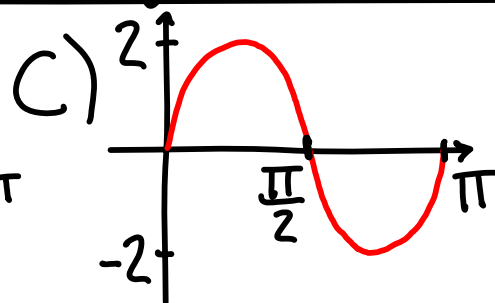
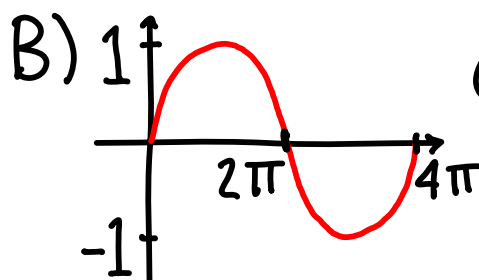
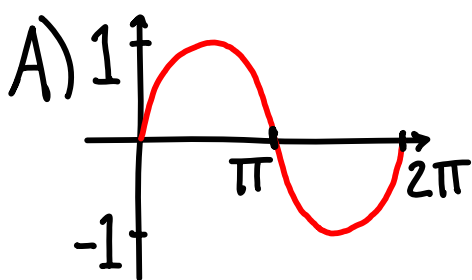
USE A PINK PAPER SCORE. **TEST FORM A**

#1) WHICH OF THE FOLLOWING IS A GRAPH OF $y = 2\sin(x)$?

#2) WHICH OF THE FOLLOWING IS A GRAPH OF $y = \sin(2x)$?

#3) WHICH OF THE FOLLOWING IS A GRAPH OF $y = \sin(x) + 2$?

#4) WHICH OF THE FOLLOWING IS A GRAPH OF $y = 2\sin(2x)$?



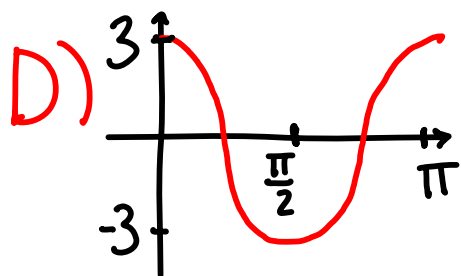
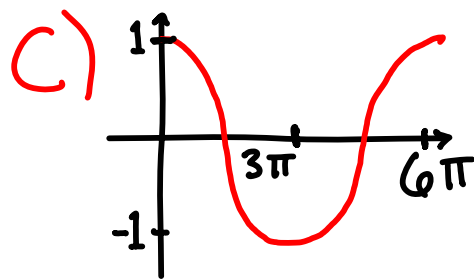
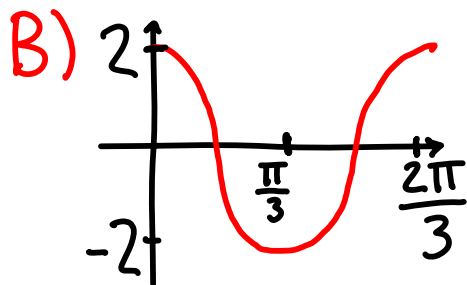
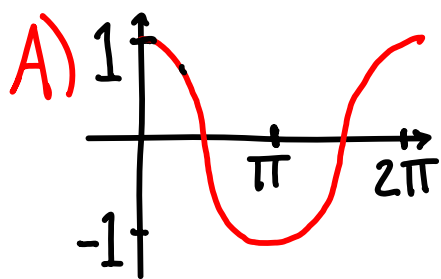
E) NONE OF THE ABOVE

#5) WHICH OF THE FOLLOWING IS A GRAPH OF $y = 3\cos(x)$?

#6) WHICH OF THE FOLLOWING IS A GRAPH OF $y = 3\cos(2x)$?

#7) WHICH OF THE FOLLOWING IS A GRAPH OF $y = 2\cos(3x)$?

#8) WHICH OF THE FOLLOWING IS A GRAPH OF $y = \cos(2x) + 1$?



E) NONE OF THE ABOVE

#9) WHAT IS THE PERIOD OF $y = 3\cos(4x - 2) + 9$?

A) 4π B) 8π C) $\pi/4$ D) $\pi/2$ E) NONE OF THE ABOVE

#10) WHICH TWO FUNCTIONS HAVE IDENTICAL GRAPHS?

A) $y = \sin^2(x)$ B) $y = 1 + \cos^2(x)$ C) $y = 1 + \tan^2(x)$
 $y = \cos^2(x)$ $y = \sin^2(x)$ $y = \sec^2(x)$

D) $y = 1 - \cot^2(x)$
 $y = \csc^2(x)$

E) NONE OF THE ABOVE